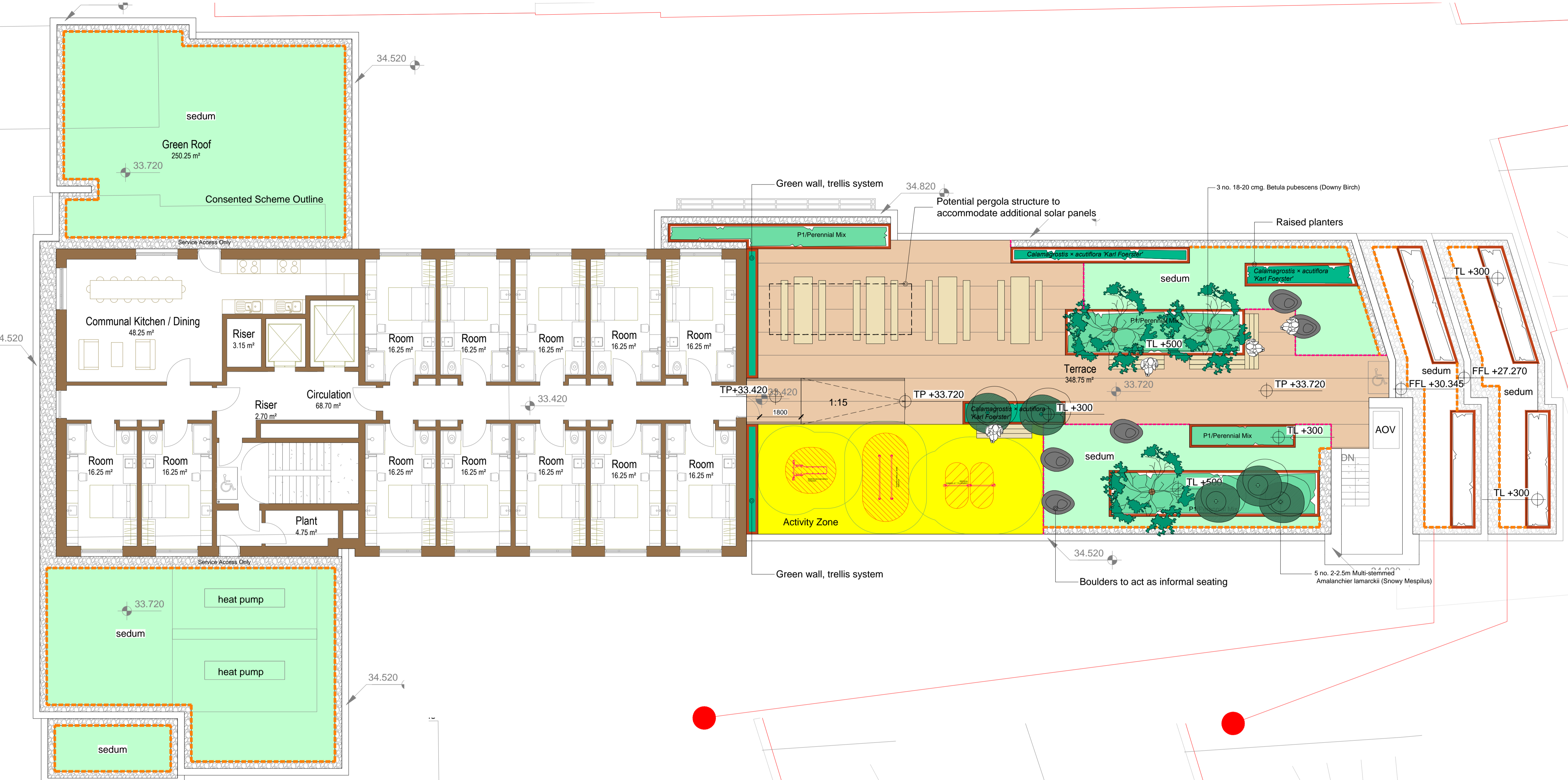
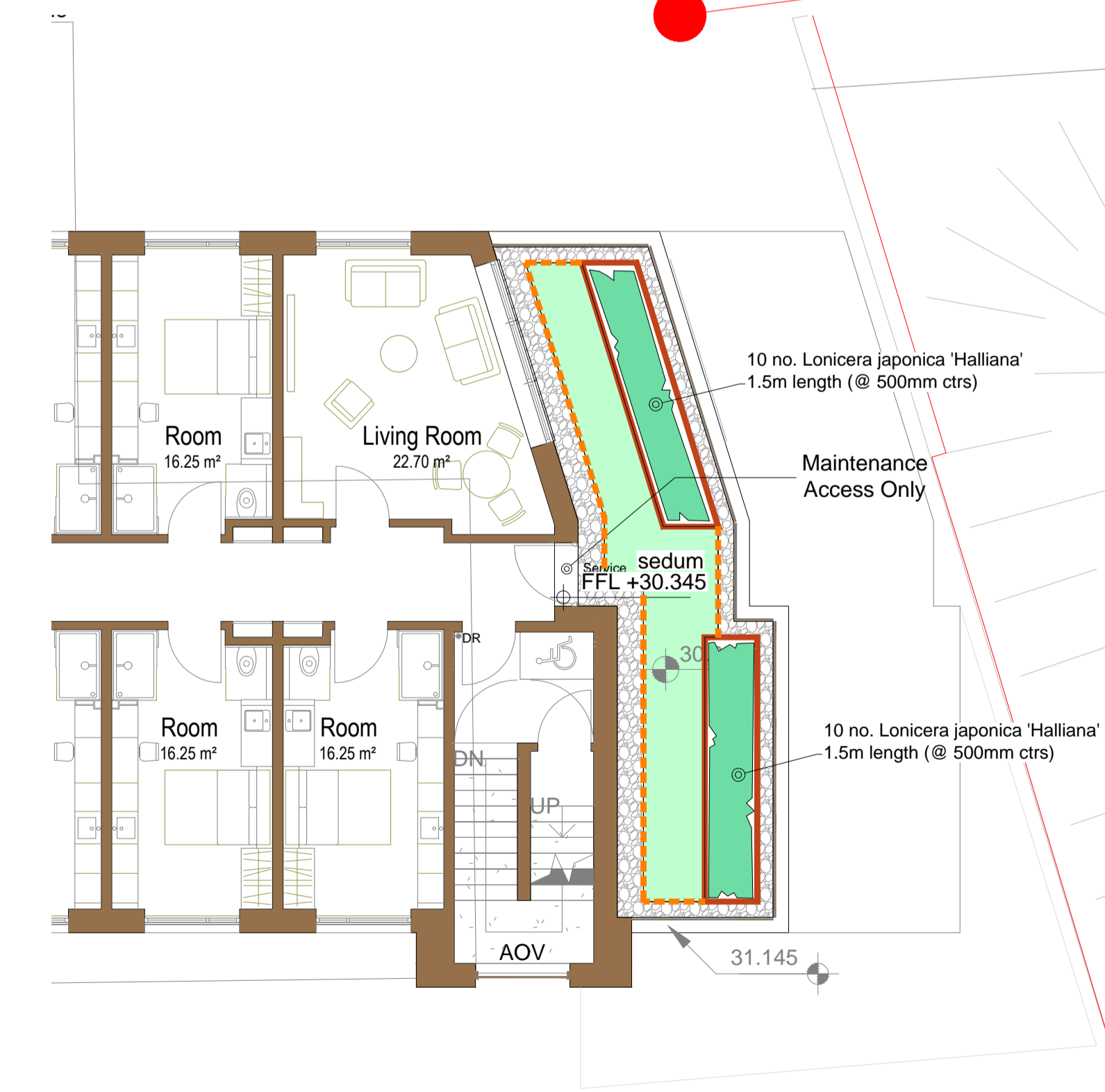


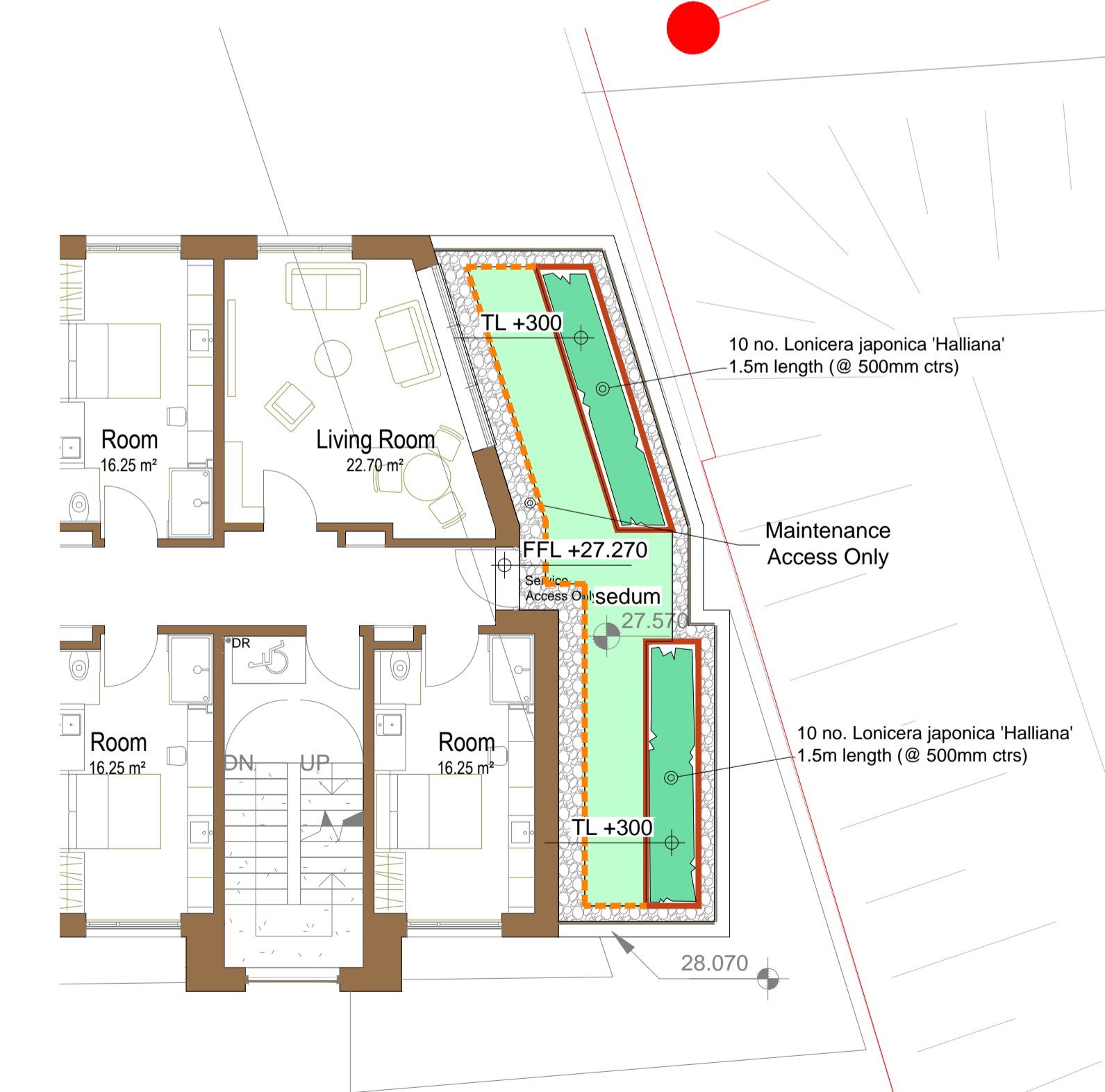
KEY	MATERIAL REFERENCE & DESCRIPTION
Q23/170:	LOOSE GRAVEL OVERLAY VEGETATION BREAK <ul style="list-style-type: none"> Graded 20-40 mm round washed pebbles, grey single uniform colour. Depth: min 100 mm. Width: 500 mm at fire-breaks; 300mm at roof edges.
Q25/110:	NATURAL STONE SLAB PAVING SYSTEM <ul style="list-style-type: none"> Golden granite flamed textured slab paving in gauged width random length bond to match granite within engineer's adjacent development immediately north of site on sub-base to design detail & specification.
Q21/115A:	PAVING - EXPOSED AGGREGATE CONCRETE FINISH <ul style="list-style-type: none"> In situ concrete paving laid to falls and treated with an exposed aggregate retarder by Plant to provide a more attractive surfacing treatment. Concrete to be a designed mix with a high amount of rounded aggregates.
Q26/360A -	IN SITU SYNTHETIC SURFACING SPECIFICATION TO FITNESS EQUIPMENT <ul style="list-style-type: none"> Wet pour, in situ laid polyurethane bound EPDM rubber crumb surface to BS 7188. Colour: TBC. Thickness: 40mm.
Q31/216:	PLANTS/ TREES - SPECIFICATION CRITERIA
Q31/510:	ORNAMENTAL SHRUBS
Q31/512:	TREE PIT ROOT BARRIERS
Q31/525:	TREE PIT ACCESSORIES: SEMI-MATURE TREES
Q31/235:	MEDIUM-TALL HEIGHT CONTAINER GROWN PLANTS -
Q31/235:	ORNAMENTAL SHRUBS <ul style="list-style-type: none"> 75mm depth medium-grade bark mulch on 90gs/m² black weed-guard geotextile landscape fabric on imported topsoil to BS:3882 450mm depth on free-draining sub-base
Q31/235:	LOW-MEDIUM HEIGHT CONTAINER GROWN PLANTS -
Q31/235:	ORNAMENTAL SHRUBS <ul style="list-style-type: none"> 75mm depth medium-grade bark mulch on 90gs/m² black weed-guard geotextile landscape fabric on imported topsoil to BS:3882 450mm depth on free-draining sub-base
Q37/130:	EXTENSIVE GREEN ROOF: <ul style="list-style-type: none"> Extensive sedum matting on drainage board to extensive green roof as follows: Limum Sedum Plus Green Roof Mat (or equivalent) appropriate to 35mm substrate depth on 35mm depth approved proprietary green-roof substrate of mixed non-organic mineral with a low percentage of organic matter on 40mm drainage board.
Q50/225:	SEATING WITH BACK-REST <ul style="list-style-type: none"> Solid Bench with back rest
Q50/253:	NATURAL STONE BOULDERS: <ul style="list-style-type: none"> 1000-1400mmϕ rounded natural stone boulders of Irish granite or limestone grouped within planting to act as single and grouped informal seating elements and features.
	STEPPING STONES: <ul style="list-style-type: none"> Natural stone of Irish granite or limestone.
Q10/114A -	EDGING TRIM - ALUMINIUM <ul style="list-style-type: none"> L-shaped 102x75x2440 mill finish aluminium landscape edging trim, fixed with concrete nails at 250mm centres, into continuous C20P 200x300mm concrete foundation, and secured by min. 50mm depth increasing to 70 mm continuous C20P concrete as per detail.
Q10/114B -	EDGING TRIM - PRESSURE-TREATED TIMBER <ul style="list-style-type: none"> 150x38x3600mm long pressure-treated larch softwood edging boards. Secure edging boards in place with pressure-treated with preservative larch softwood pegs, 38x38x400mm long, with weathered top, fixed with min 2 no. 65mm long galvanised screws into edging boards. Provide a peg at 1220mm centres to secure edgings and drive into ground to fix securely. Installation height of pegs 30mm below top of edging.
Q10/114C -	EDGING TRIM - COR-TEN STEEL <ul style="list-style-type: none"> 6mm thick Cor-Ten steel sheets in straight runs with 5mm wide open joints between sheets. 50x6mm Cor-Ten flat horizontal top to planter along exposed surface of planters. Provide 100mmϕmm Cor-Ten steel strap welded to back of planter to seal 5mm open joint. Strap to be extend to full height of planter and finished 100mm below top of corten edging to join sheet to sheet. At rim str provide 2 no. 100x100x100x6mm L-shaped Cor-Ten flat welded to vertical Cor-Ten edge and screw-fixed through base of L-shaped Cor-Ten flat to fresh concrete races. Install one at base of haunching and one to top of haunching. Foundations to engineer's design detail & specification.
S14 -	IRRIGATION <ul style="list-style-type: none"> Drip-fed pipe automated irrigation system to soft landscape works over podium slab areas. Total area: 358m²



LANDSCAPE PLAN - FIFTH FLOOR
/scale 1:100



LANDSCAPE PLAN - FORTH FLOOR /scale 1:100



LANDSCAPE PLAN - THIRD FLOOR /scale 1:100

STEPHEN DIAMOND ASSOCIATES
 CHARTERED LANDSCAPE ARCHITECTS

68 Pearse Street Dublin 2 tel: 01 6775670
 email: mail@sdacta.ie fax: 01 6775669

Client **Bartra Property (Eblana) Limited**

Project **Eblana Avenue**

Title **Roof Terrace - 3rd/4th/5th Floor** Scale **1:100 @ A1**

Dwg No **18-497-PD-03** Date Issued **2019-04-16**

Drawn **LP** Purpose **Planning** Checked **SD**

